

Who we are



Insel Gruppe
Kommunikation und Marketing
Freiburgstrasse
CH-3010 Bern

www.inselgruppe.ch

ZL 10082074 | 130001_E_2020_04_07_kfg/mm

Enterprise

Insel Gruppe is a network of hospitals comprising the Inselspital and the Spital Tiefenau in Bern, as well as the four regional hospitals in Aarberg, Belp, Münsingen and Riggisberg. Together, these six traditional hospitals make up Switzerland's largest comprehensive health care system: ranging from highly specialised medi-

cal treatments to the provision of primary health care. In this way, we ensure that every patient receives the best possible care and is treated at the appropriate location and according to the latest developments and methods.



Employees

In order to ensure the successful continuation of Insel Gruppe as a renowned research and development centre, we rely on both male and female specialists from roughly 100 nations.

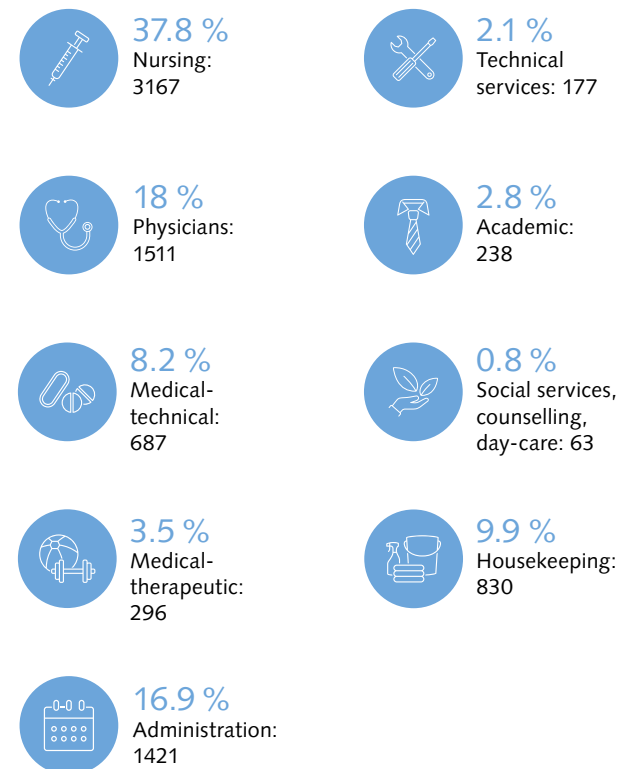
We embrace diversity and equal opportunity. We promote a corporate culture in which all our employees are involved and feel integrated and equal.

10,780 competent and motivated employees are committed to medicine, nursing, service, infrastructure, administration, teaching and research for the well-being of patients and visitors alike.

We attach a high priority to humanness, professional competence and reliability. Excellent treatment, care and service coupled with high-quality standards are manifest in our employees' daily work.

Insel Gruppe is a social employer. It assumes responsibility for the individual training and further education of its employees, while supporting and respecting a meaningful way of balancing their professional and personal lives.

Employees according to occupational groups in full-time units
100 %: 8390 excluding trainees (72 % women; 28 % men)



Business strategy

At the end of 2018, as part of its reorientation, Insel Gruppe developed a new vision and strategy – with the aim of being one of the world's leading hospital groups for university and integrative medicine.



Patient orientation

We optimise our services while continually taking into account the needs of our patients and their dependants.



Quality leader

By cultivating a culture of quality and safety, Insel Gruppe attains the highest level of results throughout Switzerland.



Employees are key to success

Our employees and their specialist expertise are the key success factors for Insel Gruppe.



Digital medicine

Insel Gruppe is working to become the pioneer in digital medicine by 2022.



Innovation, diagnostics and therapy

Insel Gruppe stands out from its competitors due to innovations in diagnostics and therapy across its locations.



Age and health

Insel Gruppe has an age-appropriate infrastructure and focuses on the medical treatment and needs of elderly people, as well as multi-morbidity, chronic diseases and dementia.

Mission

We have enhanced people's health and quality of life since 1354:

- by offering to patients at all stages of life, around the clock and in the right place, high-quality medical services
- by conducting innovative research and translating our findings into practice for the benefit of our patients
- by offering education, training and continuous professional development in our multifaceted professional fields
- by striving for simplicity and sustainability in our daily work
- by cultivating our networks and creating added value together with our cooperation partners
- by ensuring interdisciplinary and interprofessional cooperation
- by attracting competent and dedicated staff members as a preferred employer

Together we are strong.

Values

Our values shape our actions and decisions.



Humanness

Respect and a high regard for the individual are central to everything we do.



Quality

Our actions comply with the highest standards of quality and safety.



Cooperation

We treat one other with respect, cultivate professional cooperation, promote interdisciplinarity and appreciate each other.



Competence

We have confidence in our abilities and share our knowledge for the benefit of all our patients.



Innovation

We seek new approaches as well as promote research and innovation.



Integrity

We are committed to our values and are guided by sincerity, transparency and dependability.

Vision

We aim to be one of the world's leading hospital groups for university and integrative medicine by providing patients with comprehensive healthcare based on quality, pioneering research, innovation and education.

Facts & Figures

6

locations in
canton Bern

863,989

outpatient
consultations

10,780

staff members
from roughly
100 nations

64,805

inpatients discharged

300

trainees in
14 apprenticeships
(upper secondary level)

19,973

weeks of further education and
training for healthcare professionals
(tertiary level)

Rehabilitation for

1401

inpatients

Operating revenue KCHF

1,736,190